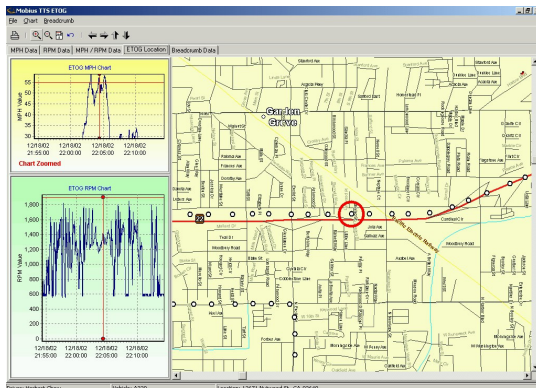




Mobius TTS[®] Electronic Tach-o-graph (ETOG)

The Mobius TTS Electronic Tach-o-graph or “ETOG”, is a reporting component within Cadec’s Mobius TTS Office application. ETOG allows the user to drill down to extreme trip detail when summary or exception reports indicate it should be done.



ETOG Speed and Location View

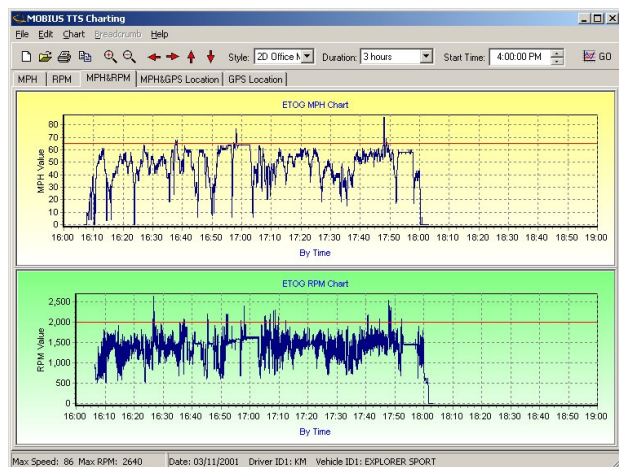
during or following a trip, this data can be viewed in a combination of graphs, charts and maps. A transportation manager can even replay a trip and take a virtual ride using the Animated Breadcrumb feature.

Mobius TTS also provides a precise time stamp and geo-code at every event. Each event or selected events can even be viewed on a map (patented) to be able to see exactly what happened where.

- Mobius TTS electronic tachograph captures all speed and RPM information.
- The data can be graphically viewed on a second by second basis for any time period.
- Cadec’s patented map view with speed and RPM on the same screen provides a unique view of your vehicle/driver’s speed and RPM with location.
- Identify speeds on any road

Based on data collected from the Mobius TTS on-board computer, speed and RPM are recorded second-by-second, anytime the vehicle is in use, directly from the engine ECM through the SAE-J1708 connection. Additionally, vehicle location is collected and transmitted through the built in GPS function.

Mobius TTS can then pre recording a “breadcrumb trail” while the vehicle is in motion. The user configures how often these readings will be taken, anywhere between every 100th of a mile (approx 50 ft.) to every 100 miles for the entire trip. In the case of an accident or sudden deceleration, geo-codes are actually recorded every second for a three minute “snapshot” of the event and stored in a non-volatile area of memory. At any point



ETOG Three Hour Speed and RPM Report